

ipeps+



## ADDERLink IPEPS+

High performance KVM over IP that delivers a complete, secure, non-blocking approach to Remote Server management

### Features

#### Independent Operation

Gives full control even during boot up, BIOS level or computer crash states. The ADDERLink ipeps+ will work even if the controlled device is not operational.

#### High Video Performance

The ADDERLink ipeps+ will accept an HDMI input up to 1920x1200 resolution. It incorporates the renowned VNC Viewer from RealVNC, which allows frame rates of up to 30fps, depending upon available network bandwidth and content. Alternatively, it may be used with any VNC viewer that supports RFB v3 or v4. The unit may be attached to computers with DVI or DisplayPort DP++ (dual-mode) with a converter cable.

#### Highly Secure

Enterprise grade security (using AES 128 or 256-bit encryption and RSA 2048-bit public key authentication) is employed as standard. This is further enhanced by VNC, which allows the creation of ciphered user communications.

#### User Management

The ADDERLink ipeps+ can create up to 16 user profiles with defined access rights. LDAP integration with Active Directory is provided for enterprise level user authentication. Up to 8 remote users may access the unit simultaneously.

#### EDID Management

The ADDERLink ipeps+ has intelligent EDID management allowing the user to specify the video modes generated by the controlled device.

#### Local console

KVM connections are available for local user access. This may be useful during emergency and system maintenance activities.

#### Remote Gateway To ADDERLink Matrix Products

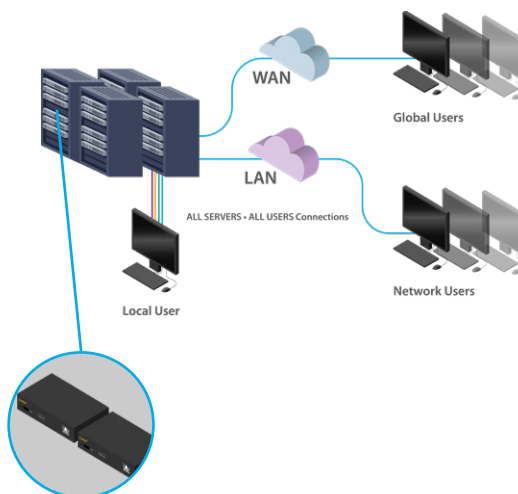
The ADDERLink ipeps+ may be used as a remote gateway into the ADDERLink INFINITY, DDX and XDIP matrix systems, plus the ADDERView AV4Pro Switch. This will allow remote users to access any computer connected to the switch.

### Product In Brief

A powerful and flexible KVM over IP product contained within a compact unit, the ADDERLink ipeps+ enables computer access from anywhere in the world, securely and remotely via the Internet or a corporate network.

The ADDERLink ipeps+ uses RealVNC client software that is specifically designed for secure, high performance KVM over IP applications.

Despite its small size, it offers high performance, including 1920x1200 video streaming at up to 30 frames per second, with non-blocking access for one local user and up to 8 remote users.





## Technical Specifications

### Controlled Computer Connections

HDMI and USB type B. Supports USB 1.1 and 2.0 HID devices (keyboard, mouse, tablet and touch). Can be interfaced to VGA, DVI and DisplayPort with appropriate adaptors.

### Video Resolutions

The system supports resolutions to a maximum of 1920x1200 @60Hz.

### Software Compatibility

All known operating systems. No drivers required.

### Network Connections

RJ45 (8p8c) Ethernet port.

### Local Console Connections

HDMI, 3 x USB type A

Audio 3.5mm (reserved for future use)

### Front Panel

LED status indicators for network (LNK), local user connection (LOC), remote user connection (REM) and power/upgrade (PWR).

### Physical Design

Compact case, robust metal construction. 169mm/6.65" (w), 31mm/1.22" (h), 120mm/4.8" (d), 0.6kg/1.3lbs.

### Power Supply

100-240 VAC, 47/63Hz

12 VDC 18W output from power supply unit.

### Operating Temperature

0°C to 40°C / 32°F to 104°F.

### Approvals

CE, FCC.

## About Adder

Adder is a leading developer and thought leader in connectivity solutions. Adder's advanced range of KVM switches, extenders and IP solutions enable the control of local, remote and global IT systems across the enterprise. The company distributes its products in more than 60 countries through a network of distributors, resellers and OEMs. Adder has offices in the China, Germany, Japan, the Netherlands, Singapore, Spain, Sweden, United Kingdom and United States.

To find out more, visit:  
[adder.com](http://adder.com)

## Ordering Information

IPEPS-PLUS-XX: Single node with 12V PSU and country specific power cable.

XX= Mains Lead Country Code:

UK = United Kingdom

US = United States

EURO = Europe

JPN= Japan

AUS = Australia

## Additional Accessories

**VSCD11:** HDMI to DVI-D convertor cable. 2m/6.5ft.

**VSCD12:** Lockable HDMI cable. 1.5m/5ft.

**RMK8:** Rackmount kit

## What's In The Box

1 x IPEPS-PLUS unit

1 x power supply unit

1 x country specific power cable

1 x 2m/6.5ft. HDMI cable

1 x 2m/6.5ft. USB A to B cable

1 x quick start guide