

SKM-08

8-Port KM Switch with USB 2.0 Sharing



Manage Keyboard and Mouse operations on eight computers from a single workstation with support for USB 2.0 sharing

FEATURES

- Manage eight connected computers
- Dedicated processors for emulation
- Supports independent switching for USB 2.0 devices
- Full keyboard and mouse emulation
- PASS (Progressive Automatic Screen Switching) technology for automatic switching following the user's mouse movement
- Front-panel switching and RS-232 control
- Driverless operation for easy implementation, including multi-head use

APPLICATIONS

- Government Operations
- Defense Applications
- Security Control Rooms
- Corporate Communications
- Server Operations
- Medical Campuses
- Airports



Smart-AV
SMART AUDIO VIDEO INNOVATION

THE ULTIMATE IN KM WITH MULTIPLE DISPLAYS

The SKM-08 enables users to manage and switch KM (Keyboard and Mouse) functions of eight connected computers, including multi-head computers. With support of multiple displays per computer, users can create the ultimate KM environment. This can be a superior solution to operating a KVM switch, especially among multi-head computers. Users can simply connect the monitors directly to the computers and use the SKM-08 to switch between computers for KM operation.

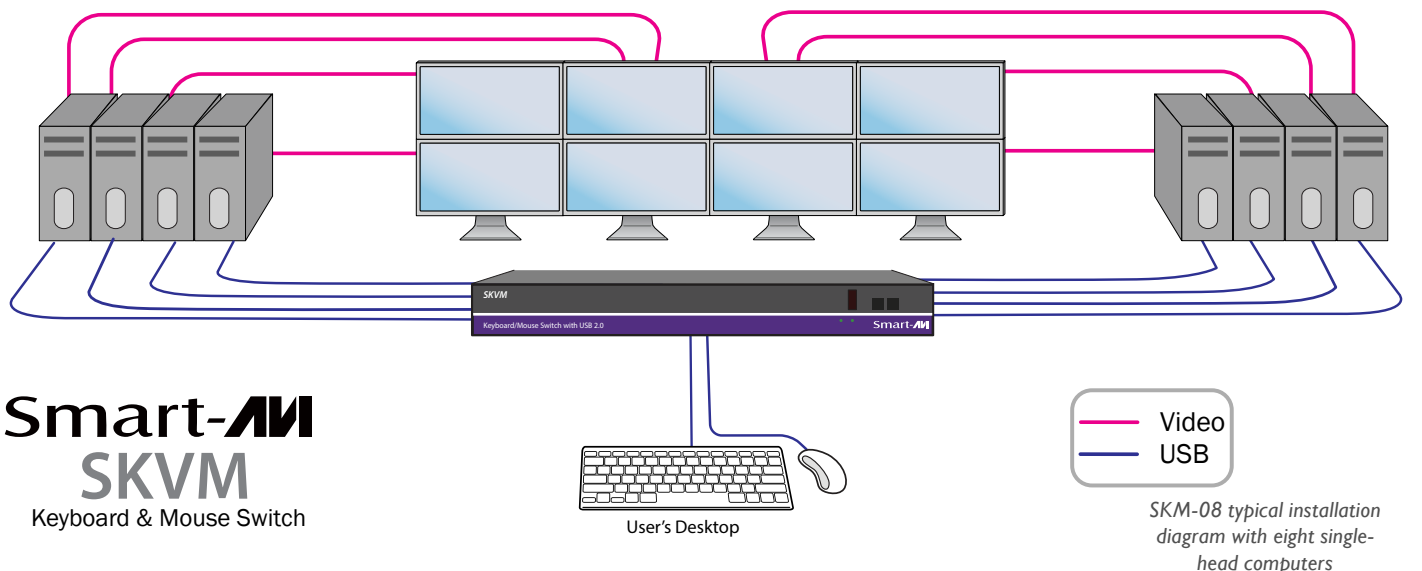
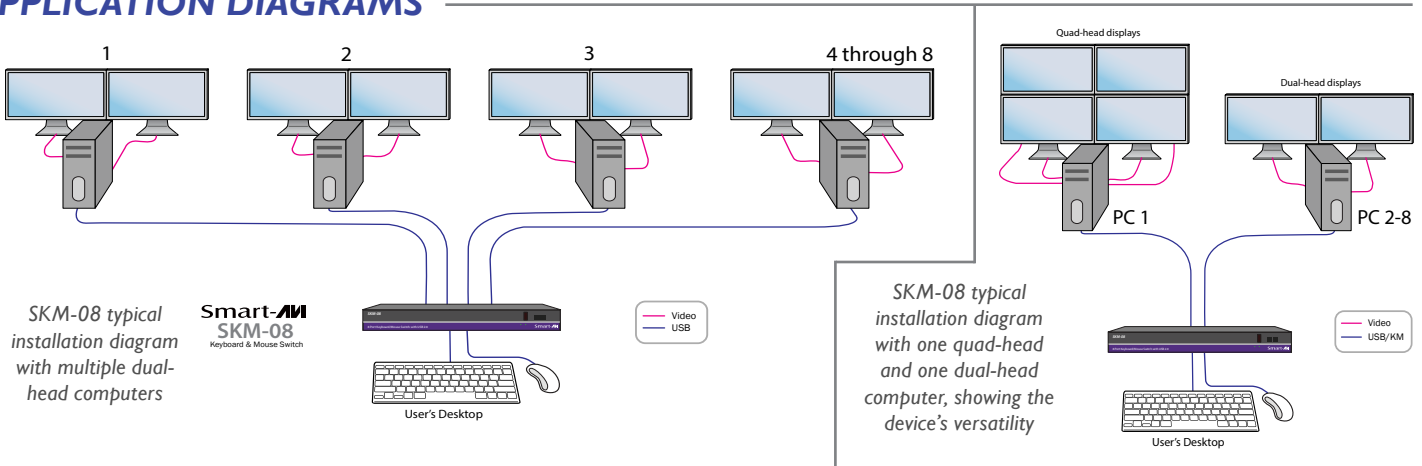
The SKM-08 is completely driverless, requiring no software or updates (although the device has the capability for firmware updates). It is compatible with virtually any PC and all major operating systems without the need for software downloads, and it supports all USB 2.0 devices. With full USB keyboard and mouse emulation, the SKM-08 delivers the utmost in user-friendly operation. Furthermore, the device enables users to control KM functions on one computer while maintaining the connection of other USB peripheral devices on another connected computer simultaneously, without interruption for improved workflow.

Users can switch inputs via the buttons on the front panel or hot keys. The SKM-08 is the first KM device on the market to offer RS-232 control. Users can also switch using a double click of a mouse's center button (known as Mouse Gesture Switching). In single-head mode, users can switch computers with SmartAVI's new PASS (Progressive Automatic Screen Switching) technology, which enables the device to automatically switch computers based on where the user's mouse goes. It's a quick, efficient and intuitive way to provide smooth switching that corresponds with a user's cursor movement.

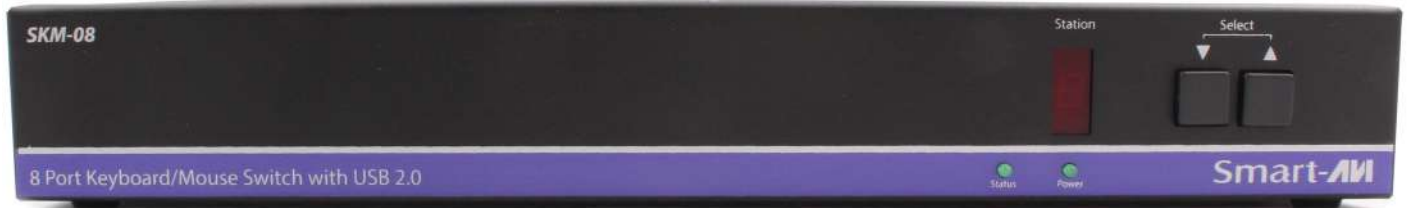
DRIVERLESS MULTI-HEAD COMPUTER OPERATION

The SKM-08 allows up for numerous displays to be used with its eight connected computers. That means multiple multi-head computers can be managed with no drivers required. Users can connect up to eight 16-head computers, for example, or up to eight quad-head computers, and so on. Pictured below are three such examples of the SKM-08's functionality, including two multi-head computer layouts. PASS is not available when using multi-head computer configurations, but users can easily switch using the device's other supported switching protocols, including Mouse Gesture Switching.

APPLICATION DIAGRAMS



SPECIFICATIONS



SKM-08 Front



SKM-08 Rear

USB	
Signal Type	USB 2.0, 1.1 and 1.0 w/ internal hub
CPU Ports	(8) USB Type B (female)
User Control Interface	(2) USB Type-A for keyboard and mouse connection only (2) USB Type-A for USB 2.0 transparent
CONTROL	
Front Panel	Tactile switch
RS-232	Via control @ 9600 bps
Hot Keys	Via keyboard
Mouse	PASS Technology and Mouse Gesture Switching
OTHER	
Power	External 5VDC4A
Dimensions	12.6" W x 1.75" H x 6.6" D
Weight	10 lbs
Approvals	UL, CE, ROHS Compliant
Operating Temperature	32-131°F (0-55 °C)
Storage Temperature	-4-185 °F (-20-85 °C)
Humidity	Up to 95%
Emulation	Keyboard and mouse

ORDERING INFORMATION

Part No.	Description
SKM-08S	8-Port KM Switch with USB 2.0 Sharing. Includes: [SKM-08 & (PS5VDC4A)]



Designed and Manufactured in the USA

www.smartavi.com
Tel: 800.AVI.2131 • 818.503.6200 • 11651
Vanowen St. North Hollywood, CA. 91605

Smart-AVI
SMART AUDIO VIDEO INNOVATION