

EZWall-4x4

Multi-Format Video Wall Processor



4x4 HD Video Wall Controller with Inputs for HDMI, VGA, Composite, S-Video, Y/Pb/Pr and an Integrated USB Media Player

FEATURES

- Sixteen Screen (4x4) Multi-Layout, Multi-Format Video Wall Controller
- Four DVI Single-Link Outputs
- Inputs: One HDMI, One VGA, One S-Video, One Composite, One Y/Pb/Pr
- Supports Playing Media via USB port
- Internal EDID Tables
- 1920x1080 Output Resolution
- No additional hardware or software required
- Supports Control via Ethernet, IR and RS-232
- HDCP Compliant

APPLICATIONS

- Airports
- Command Centers
- Control Rooms
- Entertainment Venues
- Houses of Worship
- Convention Facilities
- Corporate Lobbies
- Medical Campuses



THE MOST FLEXIBLE VIDEO WALL SOLUTION

The EZWall-4x4 from SmartAVI is the perfect video wall solution for a wide variety of environments. With sixteen single-link DVI outputs, users can create an attractive and dynamic 4x4 video wall display. The EZWall-Pro includes six different types of video inputs to ensure it is compatible with as many common video sources as possible. Inputs include: one HDMI, one VGA, one S-Video, one Component, and one Y/Pb/Pr. The device also includes a fully-integrated USB media player, as well. No matter the format of the video users may want to display, the EZWall-4x4 is clearly the most flexible video wall solution currently available.

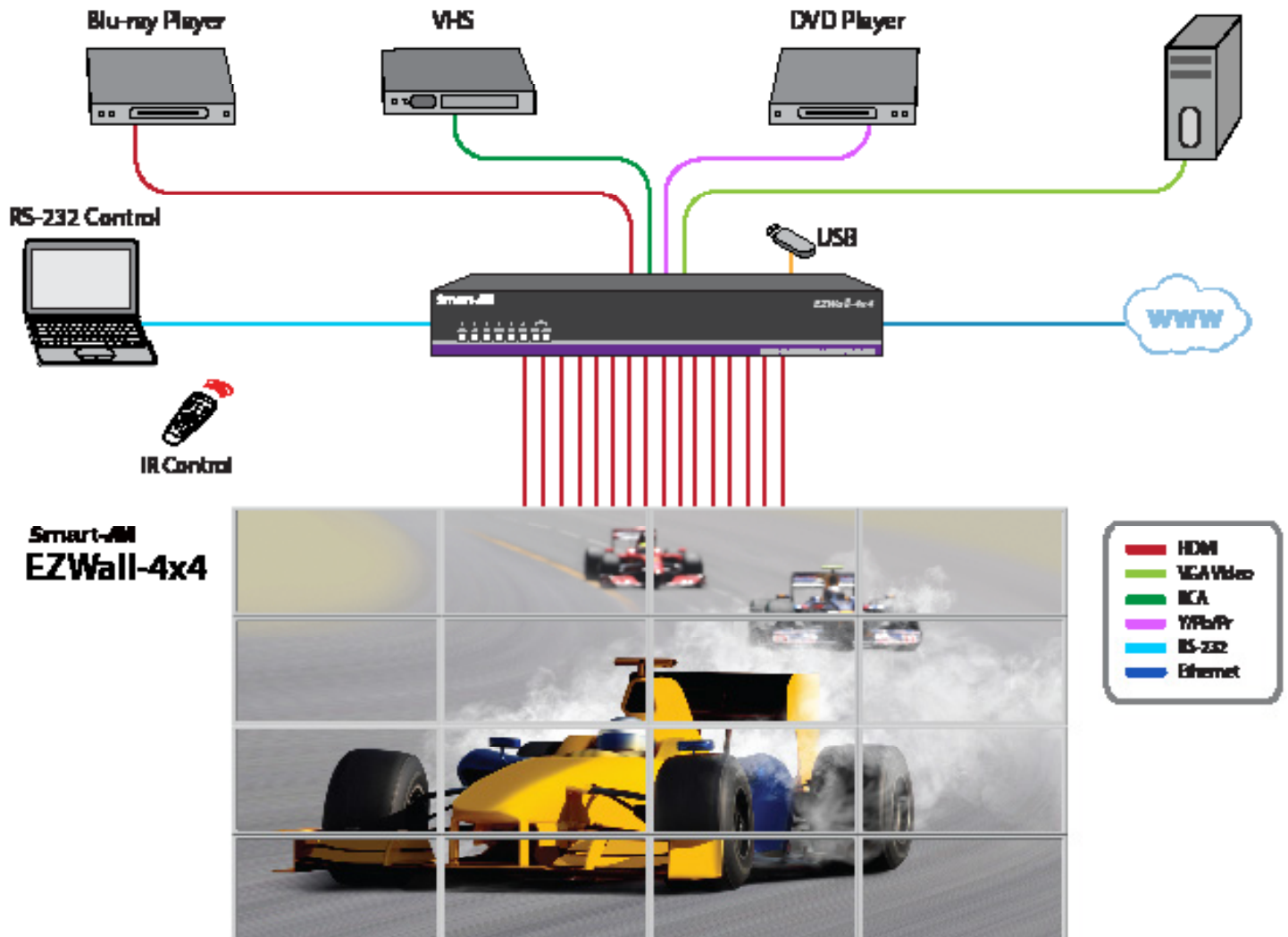
The new EZWall-4x4 is capable of stretching any HD display over sixteen screens, while maintaining any resolution up to 1920x1080 on each screen. This powerful new version stretches the video image in multiple ways, including Wall Mode (4x4)

MULTIPLE INPUT FORMATS

EZWall-4x4 is specifically designed to integrate with a wide variety of technologies, past and present. For those using the top level resolutions over HDMI cables, the device delivers top-notch HD video. And for those using older formats like VGA or Component, the device is equipped with automatic scaling for the best possible output. With the integrated USB media player, users can also take the content on a portable USB drive and directly plug it into the EZWall-4x4 with ease.

SmartAVI's EZWall-4x4 is the perfect entry-level video wall solution that has been aggressively priced within the market, with the added flexibility of plug-and-play operation and the option to manage higher-level functions remotely via IR remote, RS-232 connections and Ethernet control.

APPLICATION DIAGRAM



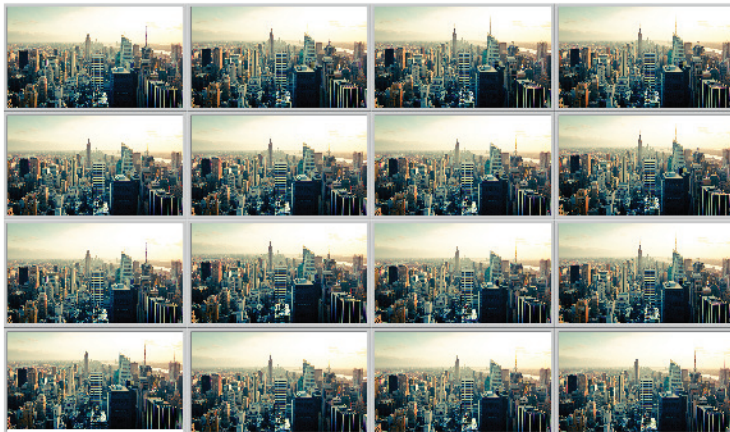
AVAILABLE CONFIGURATIONS



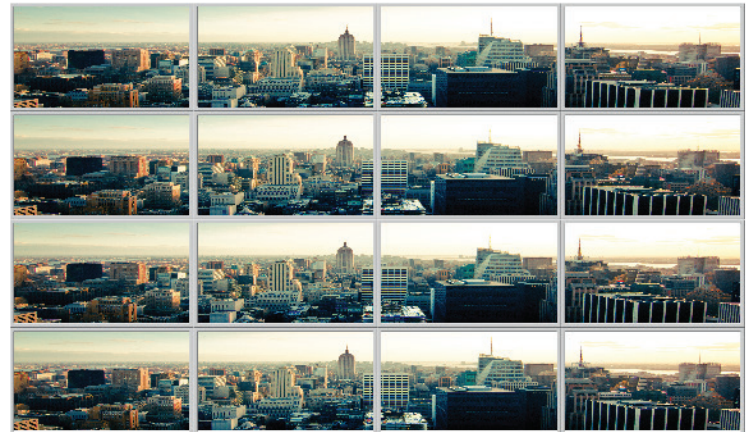
WALL MODE: - Users can project the input image across sixteen HD screens (4x4 configuration). With high-definition output, images really come to life in Wall Mode.

The control functions on the EZWall-4x4 provide users with the flexibility to get the most out of their content and screens. While many users will employ this unit for its “Wall Mode” (one image stretched across sixteen screens), others will find alternate layout options to be a better fit for their needs. Below are screen configurations showing all of the various ways users can choose to configure their content and their screens.

Utilizing the different configurations supported by the EZWall allows users to truly tap into the possibilities of the device. For those who require a solution that can handle a variety of needs from a single unit, the EZWall delivers much more than the restricted options offered by other video wall controllers.



CLONE MODE: Users can route the input image to each display individually, creating a simple and effective digital signage display.



HORIZONTAL: – Users can route the input image over four horizontally arranged screens, creating a unique and flexible horizontal display option.

ON SCREEN DISPLAY

All of the EZWall-4x4 functions are controlled through On Screen Display (OSD). OSD gives users great flexibility and ease of use when looking to manage their video wall. Configuring the EZWall-4x4 on the fly is no hassle at all, with no additional screens or computers required to make changes in real time.

INTEGRATED USB MEDIA PLAYER

A key aspect of the EZWall’s flexible nature is the integrated USB media player. By simply plugging in a USB drive or other USB device, users can access the content therein and transmit video, images and even audio to their screens via the USB port. Because it’s already built in to the EZWall, there’s no need for software or any special adapters or dongles. Just load the content on the USB drive, plug it into the EZWall, and select the USB source via the OSD. It’s that easy.

Supported video formats for the USB media player include a variety of MPEG and MJPEG formats, as well as Xvid, DivX and more. Supported audio formats include MP3, WMA, AAC and more.

SPECIFICATIONS



EZWall-4x4 Front



EZWall-4x4 Back

VIDEO	
DVI Format	Single-link
Output Resolutions	Up to 1920x1080 (@60Hz)
Input Resolutions	Up to 1920x1080
Input Video Signal	1.2 volts
Input DDC Signal	5 volts
Outputs	(16) DVI-D
Inputs	(2) HDMI, (1) VGA, (2) Composite, (1) Y/Pb/Pr, (1) USB 2.0 Type B
Audio	(1) 3.5 mm input, (1) 3.5 mm output
HDCP Compliance	1.0/2.0
CONTROL	
Front Panel	Tact Switches with OSD
RS-232	DB9 (female)
EZ-RMT IR Remote	IR NEC 38 kHz
Ethernet	RJ-45
OTHER	
Power	110-220V Internal
Power Supply Approvals	UL, CE, CSA, CEC, RoHS

USB MEDIA PLAYER	
Type	USB 2.0 Type B
Video Formats	MJPEG, MPEG-1, MPEG-2, MPEG-4, Vvid, DivX H.264
Max Resolution	1920x1080 @30fps
Max Data Rate	20 Mbps
Audio Formats	MP3, WMA, AAC, MP2, PCM, AC3
Photos	Max resolutions: JPEG - 15360x8640 BMP - 9600x6400 PNG - 9600x6400
Other	Max TXT resolution: 1200x800 Max ANSI/UNICODE GB/UTF8 file size: 1MB
MECHANICAL	
Height	3.625 in.
Width	17.125 in.
Depth	7 in.
Weight	5 lbs

ORDERING INFORMATION

Part No.	Description
EZW4X4-S	Multi-Format Video Wall Processor. Includes: [EZW4X4, EZ-RMT, SM-EYE and (CCPWR06)]



Designed and Manufactured in the USA

www.smartavi.com

Tel: 800.AVI.2131 • 818.503.6200 • 11651

Vanowen St. North Hollywood, CA. 91605

Smart-AVI
SMART AUDIO VIDEO INNOVATION